

## Americana Answers

**Who opened the first drive-in gas station?**



**A: Gulf opened up the first station in Pittsburgh in 1913.**

**Q: What city was the first to use parking meters?**



**A: Oklahoma City , on July 16, 1935.**

**Q: True or False? The 1953 Corvette came in white, red and black.**



**A: False. The 1953 Vette's were available in one color, Polo White.**

**Q: What was Ford's answer to the Chevy Corvette, and other legal street racers of the 1960's?**



**A: Carroll Shelby's Mustang GT350.**



**Q: What was the first car fitted with an alternator, rather than a direct current dynamo?**



**A: The 1960 Plymouth Valiant**

**Q: What was the first car fitted with a replaceable cartridge oil filter?**



**A: The 1924 Chrysler.**

**Q: What was the first car to be offered with a "perpetual guarantee"?**



**A: The 1904 Acme, from Reading , PA. Perpetuity was disturbing in this case, as Acme closed down in 1911.**

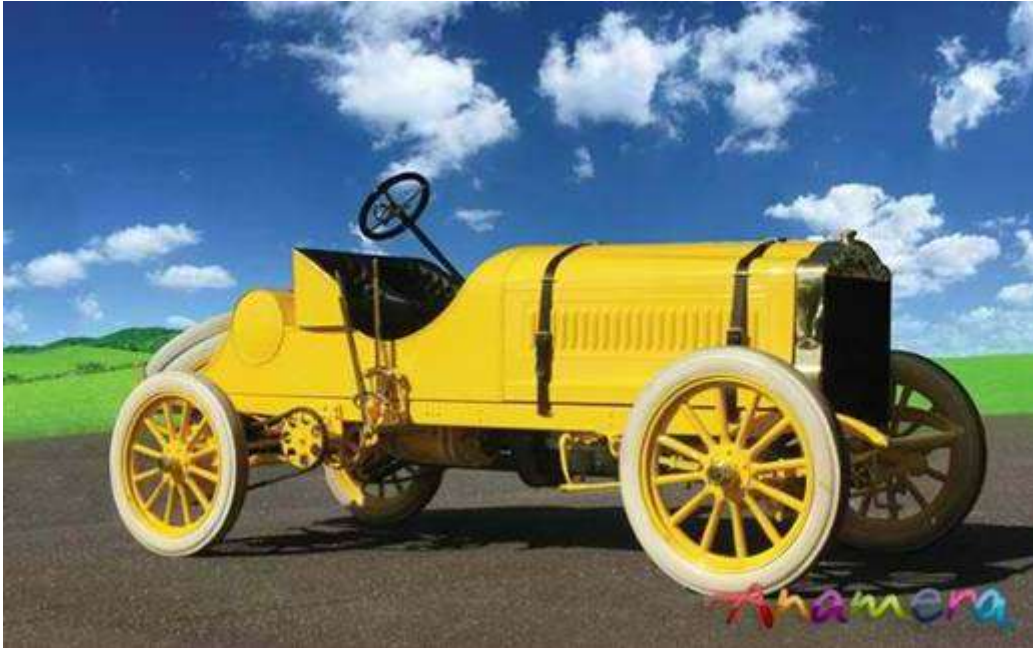
**Q: What American luxury automaker began by making cages for birds and squirrels?**



**A: The George N. Pierce Co. Of Buffalo, who made the Pierce Arrow, also made iceboxes.**

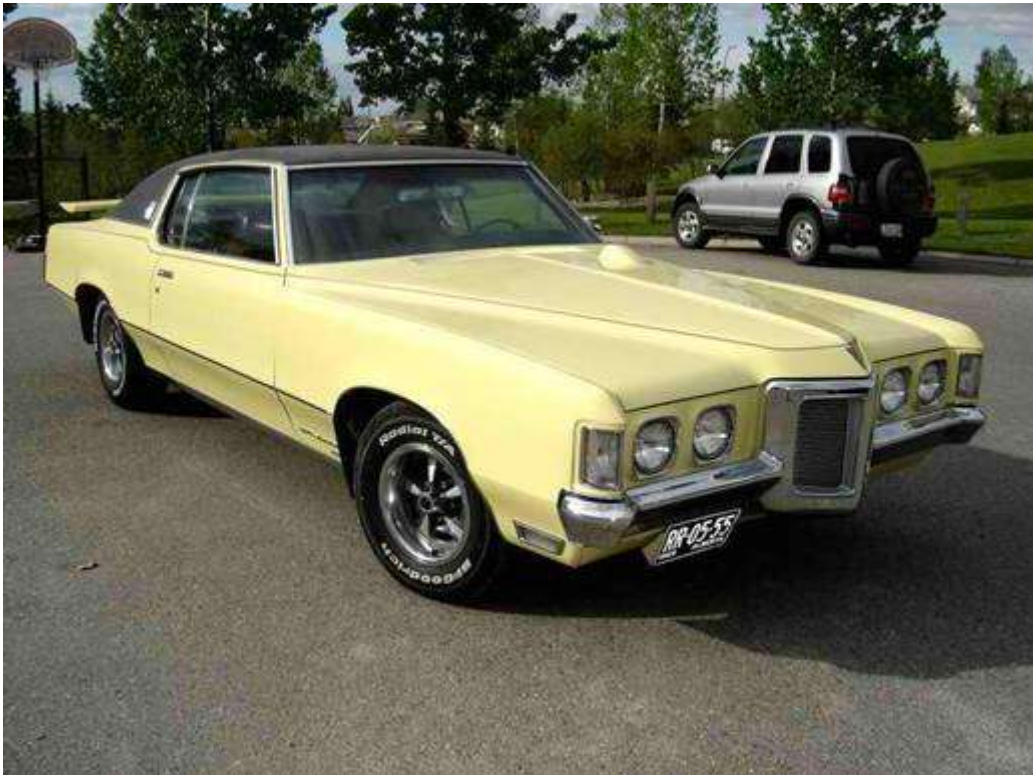


**Q: What car first referred to itself as a convertible?**



**A: The 1904 Thomas Flyer, which had a removable hard top**

**Q: What car was the first to have it's radio antenna embedded in the windshield?**



**A: The 1969 Pontiac Grand Prix.**

**Q: What car used the first successful series-production Hydraulic valve lifters?**



**A: The 1930 Cadillac 452, the first production V16**

**Q: Where was the World's first three-color traffic lights installed?**



**A: Detroit , Michigan in 1919. Two years later they experimented with synchronized lights.**

**Q: What type of car had the distinction of being GM's 100 millionth car built in the U.S. ?**



**A: March 16, 1966 saw an Olds Tornado rollout of Lansing, Michigan with that honor.**

**Q: Where was the first drive-in movie theater opened, and when?**



**A: Camden , NJ in 1933**



**Q: What autos were the first to use a standardized production key-start system?**



**A: The 1949 Chryslers**

**Q: What did the Olds designation 4-4-2 stand for?**



**A: 4 barrel carburetor, 4 speed transmission, and dual exhaust.**

**Q: What car was the first to place the horn button in the center of the steering wheel?**



**A: The 1915 Scripps-Booth Model C. The car also was the first with electric door latches.**

**Q: What's the only car to appear simultaneously on the covers of Time and Newsweek?**



## **A: The Mustang**